



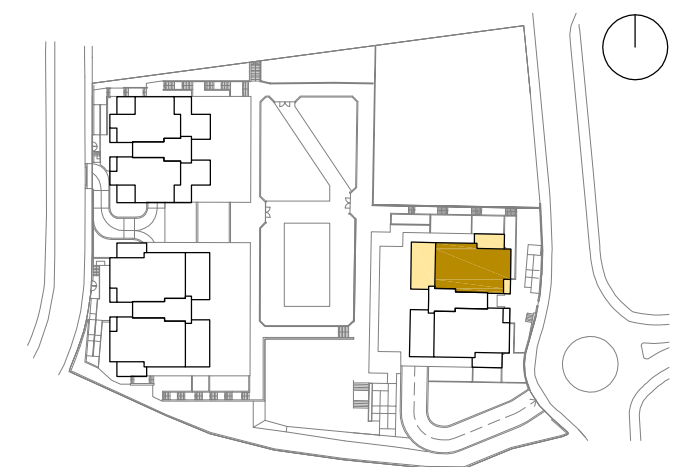
BLOCK D5. PENTHOUSE FLOOR 'RIGHT'

**3R+3B
ACCESS LEVEL**

Constructed area Interior	132,75 m ²
Terrace area	64,60 m ²

TOTAL AREA

Constructed area Interior	184,75 m ²
Terrace area	157,30 m ²
Constructed area + 50% Terrace area	263,40 m ²



The present document has strictly informative character. It may suffer variations for technical, legal and/or urban requirements. The furniture is purely informative. All measurements are approximate.

GRAPHIC ESCALE



PROJECTS:



PROMOTES:





BLOCK D5. PENTHOUSE FLOOR 'RIGHT'

**3R+3B
TOP FLOOR**

Constructed area Interior	52,00 m ²
Terrace area	92,70 m ²

TOTAL AREA

Constructed area Interior	184,75 m ²
Terrace area	157,30 m ²
Constructed area + 50% Terrace area	263,40 m ²



The present document has strictly informative character. It may suffer variations for technical, legal and/or urban requirements. The furniture is purely informative. All measurements are approximate.

GRAPHIC ESCALE



PROJECTS:



PROMOTES:

