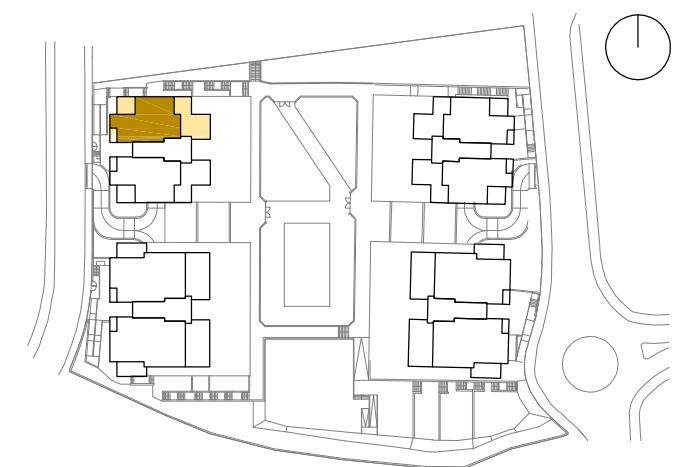




BLOCK D4. PENTHOUSE FLOOR 'LEFT'

2R+2B

Uncovered terrace	105,20 m ²
Covered terrace	25,50 m ²
Constructed area	162,24 m ²



The present document has strictly informative character. It may suffer variations for technical, legal and/or urban requirements. The furniture is purely informative. All measurements are approximate.

GRAPHIC ESCALE



PROJECTS:



PROMOTES:

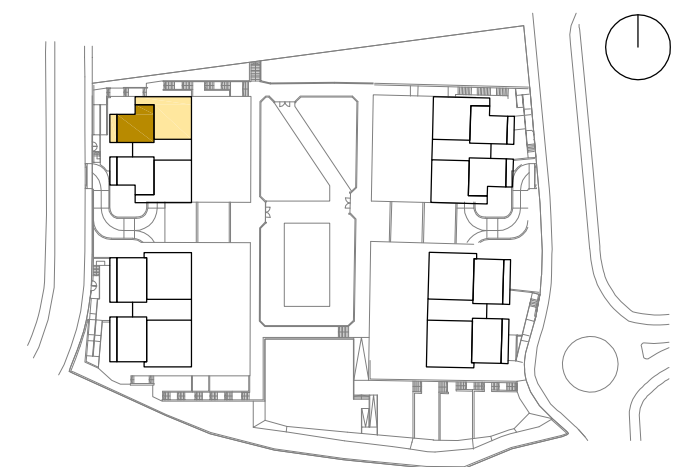




BLOCK D4. PENTHOUSE FLOOR 'LEFT'

2R+2B

Uncovered terrace	105,20 m ²
Covered terrace	25,50 m ²
Constructed area	162,24 m ²



The present document has strictly informative character. It may suffer variations for technical, legal and/or urban requirements. The furniture is purely informative. All measurements are approximate.

GRAPHIC ESCALE



PROJECTS:



PROMOTES:

